

EYEBEAM

Eyebeam Hosts First Auction with Holiday Party to Celebrate Alums and Support Next Generation of Contemporary Artists

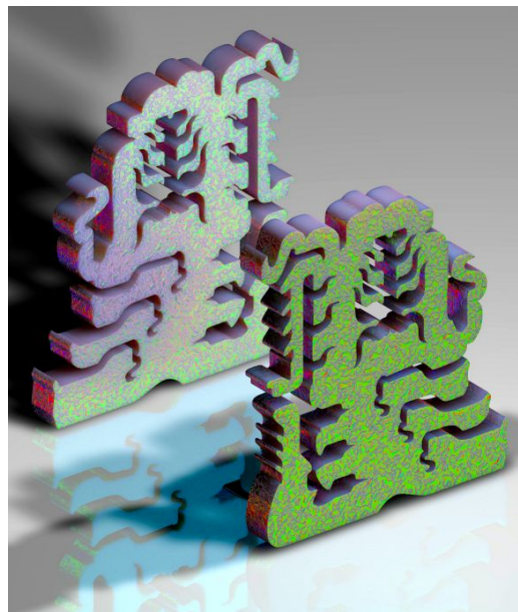
Auction x Holiday Party
December 16, 6-9PM
Private Preview 5:30-6PM
Postmasters Gallery, 54 Franklin St, New York

Works by Aram Bartholl, James Bridle, Jacob Ciocci, eteam, Claudia Hart, Nick Hornby, Daniel Libeskind, LoVid, Kristin Lucas, Jonas Lund, Michael Mandiberg, Mary Mattingly, Jennifer & Kevin McCoy, MSHR, Lilian Kreuzberger, Brenna Murphy, Rashaad Newsome, Trevor Paglen, Sascha Pohflepp, Ellen Sandor, Katie Torn, Addie Wagenknecht, Chris Woebken, Caroline Woolard

New York, NY, December 2015—Eyebeam will present its first online auction with Paddle 8 in conjunction with its annual holiday party. The event celebrates Eyebeam alums and friends, and will support the next generation of artful and publicly-minded applications of technology. As the concluding event of Eyebeam's 18th year, the party marks a coming-of-age for an organization that has, from the beginning, supported creative technologists who change the way art is made. In fact, the term creative technologist was invented at Eyebeam.

The pieces on auction will be arranged in the space of Postmasters during the evening of the holiday party, and includes work from alums from the early 2000s as well as very recent alums. The exhibition functions as a selective survey of Eyebeam's history wherein creators engage with the ideas, concepts, and tools seen throughout the exhibition.

All twenty-seven participating artists are alumni (former residents) of Eyebeam, with the exception of long-term supporters Ellen Sandor, media artist, and Daniel Libeskind, renowned architect. Examples of Eyebeam's critical support include:



MSHR, *Entity Riders*, 2015, 3D printed sculpture (digital render), edition of 5

EYEBEAM

- Trevor Paglen's experiments in televideography and drone imaging.
- Nick Hornby's melding of historical contemplation and 3D modeling into sculpture.
- Aram Bartholl's award-winning seminal contributions to digital art.
- Rashaad Newsome's software-based musical improvisations drawing on black vernacular.
- Mary Mattingly's interventions into public spaces like the waterfront.
- Addie Wagenknecht work in collectives like Open(Art), FatLab and Deep Lab, all intimately connected to Eyebeam.

This auction comes at a crucial point in Eyebeam's storied history, as it fully integrates into its Brooklyn home in Industry City, Sunset Park. It also marks an effort to double down on its core focus as a residency program which cultivates risk-taking projects through a fusion of artful and technical thinking, striving for more positive futures.

As alum Caroline Woolard, an artist and organizer who enables collaboration in the social imaginary, puts it: "Shallow projects are produced when artists are asked to fit cutting edge research into project proposals. Eyebeam's is the only support I've ever had that was truly focused on my growth, not just on one project. It's the golden standard for experimental tech and public practices."

Eyebeam is both an artist colony and an R&D lab, united within a robust residency program that provides direct cash support and a production space, rich in tools and dialogue, in which a wide range of practitioners can collaborate and discover.

//

for all press inquiries please contact:

david.borgonjon@eyebeam.org, T. +1 347 378 9163 ext. 1002